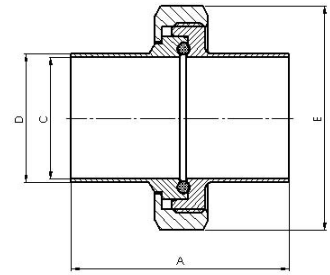
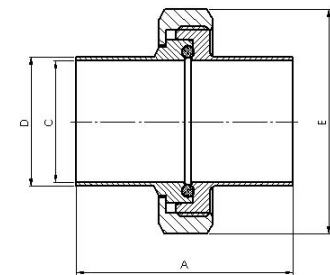


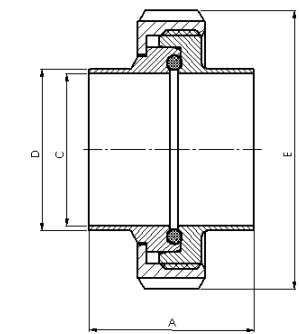
4212 Aseptik-Rohrverschraubung normale Baulänge Form A DIN 11864-1					
DIN	EPDM-O-Ring				€/ Stk.
DN	A	C	D	E	1.4404
10	76	10	13	38	38,40
15	76	16	19	44	40,20
20	76	20	23	54	42,80
25	77	26	29	63	45,80
32	88	32	35	70	50,10
40	88	38	41	78	55,60
50	89	50	53	92	67,20
65	113	66	70	112	99,80
80	117	81	85	127	132,00
100	120	100	104	148	176,40
<b>Nutmutter 1.4301</b>					



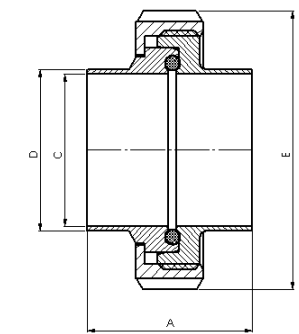
4212Z Aseptik-Rohrverschraubung normale Baulänge Form A DIN 11864-1					
Zoll	EPDM-O-Ring				€/ Stk.
DN	A	C	D	E	1.4404
25	77	22.2	25.4	63	48,10
40	88	34.8	38	78	58,20
50	89	47.8	51	92	70,50
65	115	60.3	63.5	112	104,80
80	117	72.9	76.1	127	138,60
100	119	97.6	101.6	148	185,20
<b>Nutmutter 1.4301</b>					

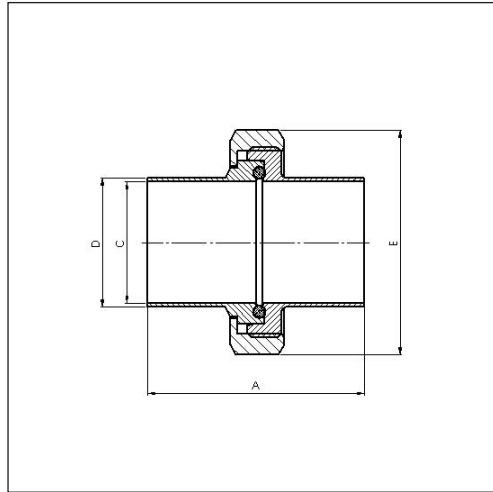


4212 K Aseptik-Rohrverschraubung kurze Baulänge Form A DIN 11864-1					
DIN	EPDM-O-Ring				€/ Stk.
DN	A	C	D	E	1.4404
10	32	10	13	38	34,20
15	32	16	19	44	36,20
20	34	20	23	54	35,50
25	42	26	29	63	37,60
32	48	32	35	70	41,80
40	50	38	41	78	43,80
50	54	50	53	92	49,50
65	62	66	70	112	68,10
80	72	81	85	127	94,50
100	86	100	104	148	128,40
<b>Nutmutter 1.4301</b>					

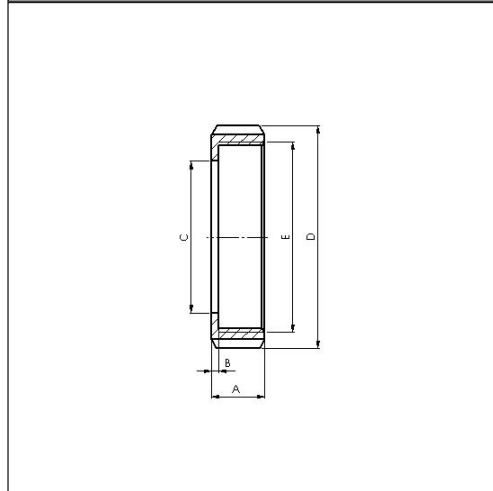


4212K-Z Aseptik Rohrverschraubung kurze Baulänge Form A DIN 11864-1					
Zoll	EPDM-O-Ring				€/ Stk.
DN	A	C	D	E	1.4404
25	42	22.2	25.4	63	39,40
40	50	34.8	38	78	45,50
50	54	47.8	51	92	51,80
65	62	60.3	63.5	112	71,40
80	72	72.9	76.1	127	99,20
100	86	97.6	101.6	148	134,60
<b>Nutmutter 1.4301</b>					

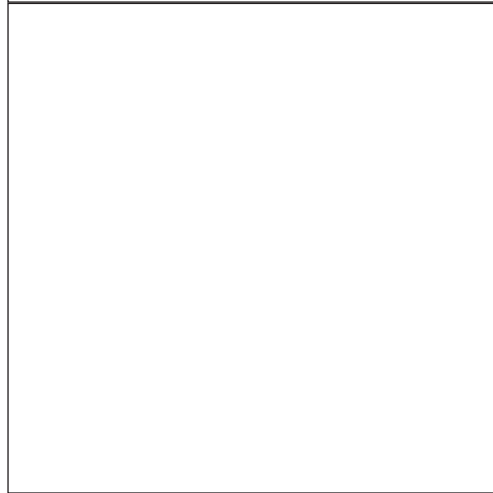


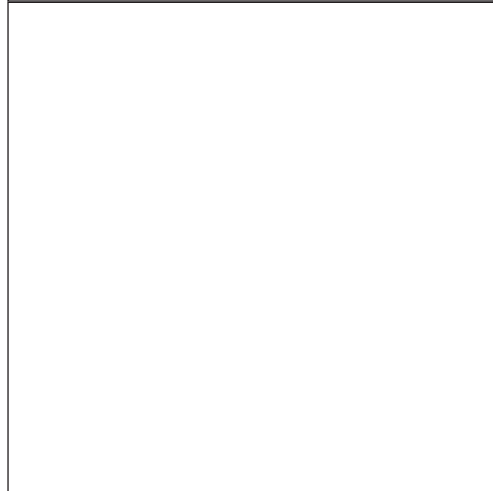


4212I Aseptik-Rohrverschraubung normale Baulänge Form A DIN 11864-1 ISO						EPDM-O-Ring	€/ Stk.
DN	A	C	D	E	1.4404		
15	78	18.1	21.3	44	48,20		
20	78	23.7	26.9	54	51,40		
25	88	29.7	33.7	63	54,60		
32	88	38.4	42.4	70	59,80		
40	90	44.3	48.3	78	66,80		
50	114	56.3	60.3	92	80,60		
65	117	71.5	76.1	112	119,20		
80	122	84.3	88.9	127	158,40		
100	130		114,3	178	206,80		
<b>Nutmutter 1.4301</b>							



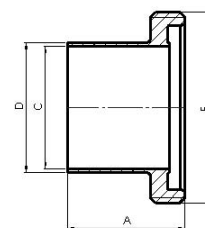
210 Nutmutter F DIN 11851							€/ Stk.	
DN	A	B	C	D	E	1.4301	1.4404	
10	18	3	19	38	Rd 28x1/8"	6,00	8,40	
15	18	3	25	44	Rd 34x1/8"	6,90	9,20	
20	21	3	31	54	Rd 44x1/6"	6,80	8,80	
25	21	3	36	63	Rd 52x1/6"	6,40	8,60	
32	21	3	42	70	Rd 58x1/6"	6,80	9,00	
40	21	3	49	78	Rd 65x1/6"	7,00	9,90	
50	22	3	62	92	Rd 78x1/6"	8,20	11,20	
65	25	4	80	112	Rd 95x1/6"	12,90	17,20	
80	30	4	94	127	Rd 110x1/4"	20,40	28,00	
100	31	5	115	148	Rd 130x1/4"	27,40	38,20	



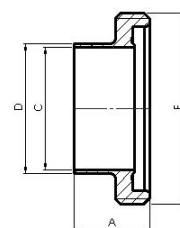

### 4213 Aseptik-Gewindestutzen normale Baulänge Form A DIN 11864-1

DIN						€ / Stk.
DN	A	C	D	E	1.4404	
10	41	10	13	RD 28x1/8"		15,30
15	41	16	19	RD 34x1/8"		15,70
20	43	20	23	RD 44x1/6"		16,80
25	43	26	29	RD 52x1/6"		19,10
32	48	32	35	RD 58x1/6"		20,80
40	48	38	41	RD 65x1/6"		22,60
50	48	50	53	RD 78x1/6"		27,80
65	60	66	70	RD 95x1/6"		42,10
80	64	81	85	RD 110x1/4"		55,50
100	64	100	104	RD 130x1/4"		71,60



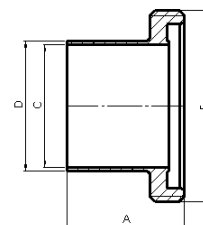
### 4213 K Aseptik-Gewindestutzen kurze Baulänge Form A DIN 11864-1

DIN						€ / Stk.
DN	A	C	D	E	1.4404	
10	19	10	13	Rd 26x1/8"		13,30
15	19	16	19	Rd 34x1/8"		13,90
20	21	20	23	Rd 44x1/6"		12,90
25	26	26	29	Rd 52x1/6"		15,80
32	30	32	35	Rd 58x1/6"		17,40
40	31	38	41	Rd 65x1/6"		17,60
50	31	50	53	Rd 78x1/6"		18,50
65	36	66	70	Rd 95x1/6"		28,20
80	42	81	85	Rd 110x1/4"		36,00
100	50	100	104	Rd 130x1/4"		50,60



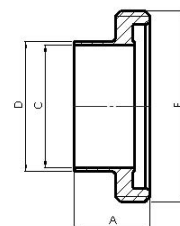
### 4213Z Aseptik-Gewindestutzen normale Baulänge Form A DIN 11864-1

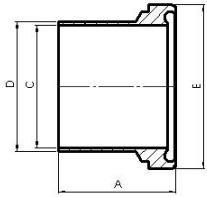
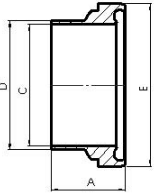
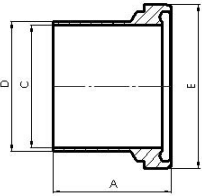
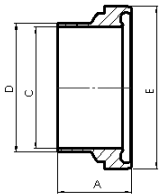
Zoll						€ / Stk.
DN	A	C	D	E	1.4404	
25	43	22,2	25,4	RD 52x1/6"		20,10
40	48,5	34,8	38	RD 65x1/6"		23,80
50	48,5	47,8	51	RD 78x1/6"		29,20
65	60	60,3	63,5	RD 95x1/6"		44,20
80	64	72,9	76,1	RD 110x1/4"		58,20
100	64	97,6	101,6	RD 130x1/4"		74,80



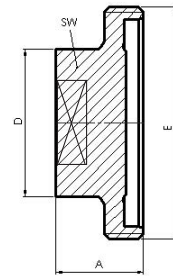
### 4213K-Z Aseptik-Gewindestutzen kurze Baulänge Form A DIN 11864-1

Zoll						€ / Stk.
DN	A	C	D	E	1.4404	
25	26	22,2	25,4	RD 52x1/6"		16,60
40	31	34,8	38	RD 52x1/6"		18,50
50	31	47,8	51	RD 78x1/6"		19,40
65	36	60,3	63,5	RD 95x1/6"		29,60
80	42	72,9	76,1	RD 110x1/4"		37,80
100	50	97,6	101,6	RD 130x1/4"		53,50

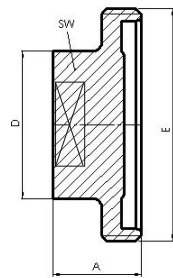


	<b>4214 Aseptik-Bundstutzen normale Baulänge Form A DIN 11864-1</b>					<b>€ / Stk.</b>	
	<b>DIN</b>					<b>1.4404</b>	
	DN	A	C	D	E		
	10	39	10	13	21,9	10,20	
	15	39	16	19	27,9	10,40	
	20	38	20	23	35,9	11,50	
	25	40	26	29	42,9	12,60	
	32	47	32	35	48,9	14,20	
	40	47	38	41	54,9	17,60	
	50	48	50	53	66,9	21,70	
	65	61	66	70	84,9	34,80	
	80	61	81	85	98,9	42,90	
	100	66	100	104	118,9	60,80	
	<b>4214K Aseptik-Bundstutzen kurze Baulänge Form A DIN 11864-1</b>					<b>€ / Stk.</b>	
	<b>DIN</b>					<b>1.4404</b>	
	DN	A	C	D	E		
	10	17	10	13	21,9	8,10	
	15	17	16	19	27,9	8,20	
	20	18	20	23	35,9	8,40	
	25	22	26	29	42,9	7,80	
	32	25	32	35	48,9	9,60	
	40	26	38	41	54,9	10,80	
	50	30	50	53	66,9	13,50	
	65	34	66	70	84,9	22,80	
	80	38	81	85	98,9	28,60	
	100	46	100	104	118,9	38,20	
	<b>4214Z Aseptik-Bundstutzen normale Baulänge Form A DIN 11864-1</b>					<b>€ / Stk.</b>	
	<b>Zoll</b>					<b>1.4404</b>	
	DN	A	C	D	E		
	25	40	22,2	25,4	42,9	13,40	
	40	46,5	34,8	38	54,9	19,20	
	50	47,5	47,8	51	66,9	23,20	
	65	63	60,3	63,5	84,9	36,80	
	80	61	72,9	76,1	98,9	45,40	
	100	65	97,6	101,6	118,9	64,00	
		<b>4214K-Z Aseptik-Bundstutzen kurze Baulänge Form A DIN 11864-1</b>					<b>€ / Stk.</b>
		<b>Zoll</b>					<b>1.4404</b>
		DN	A	C	D	E	
		25	22	22,2	25,4	42,9	8,20
40		26	34,8	38	54,9	11,50	
50		30	47,8	51	66,9	14,20	
65		34	60,3	63,5	84,9	24,00	
80		38	72,9	76,1	98,9	30,50	
100		46	97,6	101,6	118,9	42,20	

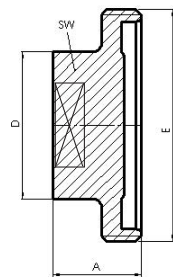
4213B Aseptik-Blindgewindestutzen Form A DIN 11864						€ / Stk.
DIN						1.4404
DN	A	D	E	SW		
10	24,0	23,0	Rd 28x1/8"	SW 19		34,20
15	24,0	28,0	Rd 34x1/8"	SW 24		35,50
20	24,0	34,0	Rd 44x1/6"	SW 30		36,20
25	24,0	44,0	Rd 52x1/6"	SW 41		36,80
32	24,0	53,0	Rd 58x1/6"	SW 46		37,40
40	24,0	60,0	Rd 65x1/6"	SW 50		38,50
50	24,0	72,0	Rd 78x1/6"	SW 65		41,20
65	28,0	87,0	Rd 95x1/6"	SW 80		49,80
80	28,0	100,0	Rd 110x1/4"	SW 95		69,40
100	30,0	120,0	Rd 130x1/4"	SW 115		88,60

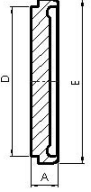


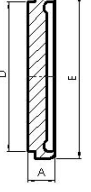
4213B-Z Aseptik-Blindgewindestutzen Form A DIN 11864						€ / Stk.
Zoll						1.4404
DN	A	D	E	SW		
1/2"	24,0	28,0	Rd 34x1/8"	SW 24		34,80
3/4"	24,0	34,0	Rd 44x1/6"	SW 30		37,20
1/4"	24,0	44,0	Rd 52x1/6"	SW 41		36,80
1 1/2"	24,0	60,0	Rd 65x1/6"	SW 50		39,20
2"	24,0	72,0	Rd 78x1/6"	SW 65		42,40
2 1/2"	28,0	87,0	Rd 95x1/6"	SW 80		50,50
3"	28,0	100,0	Rd 110x1/4"	SW 95		69,80
4"	30,0	120,0	Rd 130x1/4"	SW 115		89,80

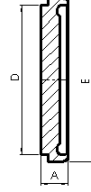


4213 B-I Aseptik-Blindgewindestutzen Form A DIN 11864						€ / Stk.
ISO						1.4404
DN	A	D	E	SW		
10	19	17,2	RD 28x1/8"	13		33,20
15	21	21,3	RD 34x1/8"	17		35,50
20	24	26,9	RD 44x1/6"	19		38,20
25	24	33,7	RD 52x1/6"	24		39,10
32	24	42,4	RD 58x1/6"	30		39,40
40	24	48,3	RD 65x1/6"	30		40,20
50	28	60,3	RD 78x1/6"	30		41,20
65	28	76,1	RD 95x1/6"	30		49,80
80	30	88,9	RD 110x1/4"	30		68,40
100	36	114,3	RD 130x1/4"	30		88,00



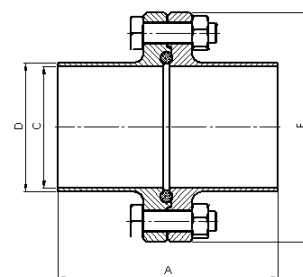

	4214B Aseptik-Blindbundstutzen Form A DIN 11864				€ / Stk.
	DN	A	D	E	1.4404
10	9	18	21,9	17,80	
15	9	24	27,9	18,10	
20	10	30	35,9	18,40	
25	12	35	42,9	15,50	
32	13	41	48,9	16,80	
40	13	48	54,9	17,40	
50	14	61	66,9	20,80	
65	16	79	84,9	28,40	
80	16	93	98,9	39,80	
100	20	114	118,9	54,60	

	4214B-Z Aseptik-Blindbundstutzen Form A DIN 11864				€ / Stk.
	DN	A	D	E	1.4404
1/2"				18,10	
3/4"				18,40	
1"	13	25,4	42,9	15,50	
1 1/2"	14	38	54,9	17,40	
2"	14	51	66,9	20,80	
2 1/2"	16	63,5	84,9	28,40	
3"	16	76,1	98,9	39,80	
4"	20	101,6	118,9	54,60	

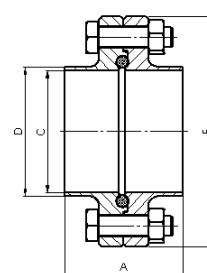
	4214B-I Aseptik-Blindbundstutzen Form A DIN 11864				€ / Stk.
	DN	A	E	D	1.4404
10	9	24	21,9	17,80	
15	10	30	27,9	18,10	
20	12	35	35,9	18,40	
25	13	41	42,9	15,50	
32	13	48	48,9	16,80	
40	14	61	54,9	17,40	
50	16	79	66,9	20,80	
65	16	93	84,9	28,40	
80	20	114	98,9	39,80	
100	22	137	118,9	64,80	


**4310 Aseptik-Flanschverbindung normale Baulänge Form A DIN 11864-2**

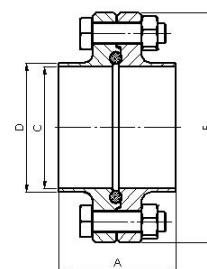
DIN	EPDM-O-Ring					€/ Stk.
DN	A	C	D	E	1.4404	
10	80	10	13	54	54,10	
15	80	16	19	59	55,20	
20	80	20	23	64	56,40	
25	80	26	29	70	62,80	
32	90	32	35	76	68,40	
40	90	38	41	82	74,50	
50	90	50	53	94	82,80	
65	108	66	70	113	121,40	
80	116	81	85	133	159,60	
100	116	100	104	159	195,60	
125	120	125	129	183	285,50	
150	120	150	154	213	394,00	


**4310K Aseptik - Flanschverbindung kurze Baulänge Form A DIN 11864-2**

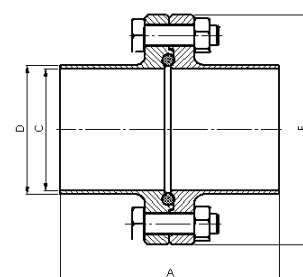
DIN	EPDM-O-Ring					€/ Stk.
DN	A	C	D	E	1.4404	
10	48	10	13	54	50,50	
15	48	16	19	59	51,20	
20	48	20	23	64	51,60	
25	48	26	29	48	52,20	
32	48	32	35	70	52,80	
40	48	38	41	76	55,40	
50	48	50	53	82	62,00	
65	48	66	70	113	78,80	
80	52	81	85	133	112,40	
100	52	100	104	159	133,80	
125	56	125	129	183	180,00	
150	56	150	154	213	264,00	


**4310 K-Z Aseptik - Flanschverbindung kurze Baulänge Form A DIN 11864-2**

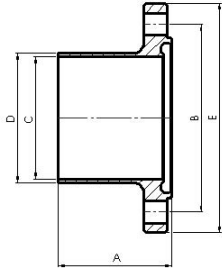
Zoll	EPDM-O-Ring					€/ Stk.
DN	A	C	D	E	1.4404	
25	48	22,2	25,4	66	54,20	
40	48	34,8	38	79	57,50	
50	48	47,8	51	92	65,20	
65	48	60,3	63,5	107	81,40	
80	48	72,9	76,1	125	116,80	
100	52	97,6	101,6	157	138,40	


**4310 I Aseptik - Flanschverbindung normale Baulänge Form A DIN 11864-2**

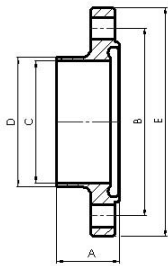
ISO	EPDM-O-Ring					€/ Stk.
DN	A	C	D	E	1.4404	
10	80	14,0	17,2	60	62,40	
15	80	18,1	21,3	62	63,20	
20	80	23,7	26,9	69	65,40	
25	90	29,7	33,7	74	69,50	
32	90	38,4	42,4	82	75,10	
40	90	44,3	48,3	88	79,80	
50	108	56,3	60,3	103	88,60	
65	112	71,5	76,1	125	129,80	
80	116	84,3	88,9	137	174,60	
100	116	109,1	114,3	168	218,40	



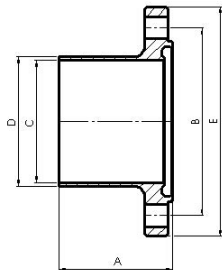
4309 Aseptik-Nutflansch Reihe 2 DIN 11864-2							€ / Stk.
DIN							1.4404
DN	A	B	C	D	E		
10	41,5	37	10	13	54		24,50
15	41,5	42	16	19	59		25,20
20	41,5	47	20	23	64		25,80
25	41,5	53	26	29	70		29,20
32	46,5	59	32	35	76		32,60
40	46,5	65	38	41	82		34,50
50	46,5	77	50	53	94		39,20
65	55,5	95	66	70	113		57,60
80	59,5	112	81	85	133		75,60
100	59,5	137	100	104	159		93,40



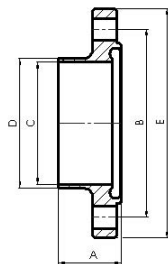
4309K Aseptik-Nutflansch kurze Baulänge / Reihe 2 DIN 11864-2							€ / Stk.
DIN							1.4404
DN	A	B	C	D	E		
10	25,5	37	10	13	54		22,40
15	25,5	42	16	19	59		22,80
20	25,5	47	20	23	64		23,80
25	25,5	53	26	29	70		24,40
32	25,5	59	32	35	76		25,10
40	25,5	65	38	41	82		25,60
50	25,5	77	50	53	94		27,80
65	25,5	95	66	70	113		35,60
80	27,5	112	81	85	133		51,80
100	27,5	137	100	104	159		61,50



4309Z Aseptik-Nutflansch Zoll normale Baulänge / DIN 11864-2							€ / Stk.
Zoll							1.4404
DN	A	B	C	D	E	F	
1"	41,5	49	22,1	25,4	66	4 x D= 9	28,40
1 1/2"	46,5	62	34,8	38,1	79	4 x D= 9	33,50
2"	46,5	75	47,5	50,8	92	4 x D= 9	34,20
2 1/2"	47,5	75	47,5	50,8	92	8 x D= 9	48,00
3"	57,5	104	72,9	76,2	125	8 x D=11	62,50
4"	59,5	135	97,4	101,6	157	8 x D=11	99,40

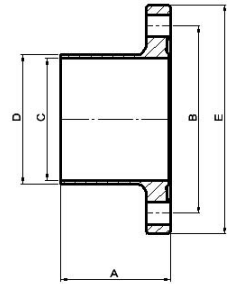


4309KZ Aseptik-Nutflansch Zoll kurze Baulänge / DIN 11864-2							€ / Stk.
Zoll							1.4404
DN	A	B	C	D	E	F	
1"	25,5	49	22,1	25,4	66	4 x D= 9	20,40
1 1/2"	25,5	62	34,8	38,1	79	4 x D= 9	22,80
2"	25,5	75	47,5	50,8	92	4 x D= 9	27,60
2 1/2"	25,5	89	60,2	63,5	107	8 x D= 9	33,50
3"	25,5	104	72,9	76,2	125	8 x D= 11	41,40
4"	27,5	135	97,4	101,6	157	8 x D= 11	56,00

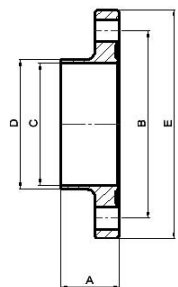




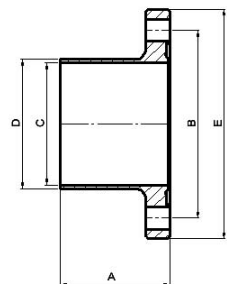
4308 Aseptik-Bundflansch Reihe 2 DIN 11864-2							€ / Stk.
DIN	A	B	C	D	E	F	1.4404
10	40	37	10	13	54	4xD=9	23,20
15	40	42	16	19	59	4xD=9	23,50
20	40	47	20	23	64	4xD=9	24,60
25	40	53	26	29	70	4xD=9	27,60
32	45	59	32	35	76	4xD=9	31,20
40	45	65	38	41	82	4xD=9	33,00
50	45	77	50	53	94	4xD=9	37,40
65	54	95	66	70	113	8xD=9	55,50
80	58	112	81	85	133	8xD=11	73,20
100	58	137	100	104	159	8xD=11	90,60



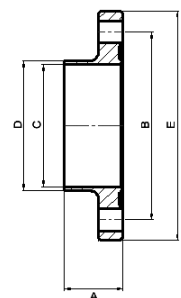
4308K Aseptik-Bundflansch kurze Baulänge / Reihe 2 DIN 11864-2							€ / Stk.
DIN	A	B	C	D	E	F	1.4404
10	24	37	10	13	54	4xD=9	22,20
15	24	42	16	19	59	4xD=9	22,40
20	24	47	20	23	64	4xD=9	22,50
25	24	53	26	29	70	4xD=9	22,80
32	24	59	32	35	76	4xD=9	23,20
40	24	65	38	41	82	4xD=9	24,10
50	24	77	50	53	94	4xD=9	27,00
65	24	95	66	70	113	8xD=9	35,00
80	26	112	81	85	133	8xD=11	50,50
100	26	137	100	104	159	8xD=11	59,80

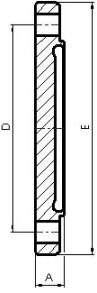
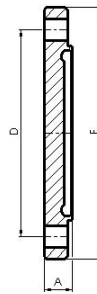
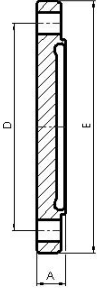


4308Z Aseptik-Bundflansch normale Baulänge DIN 11864-2							€ / Stk.
Zoll	A	B	C	D	E	F	1.4404
1"	40	49	22,1	25,4	66	4xD=9	28,80
1 1/2"	45	62	34,8	38,1	79	4xD=9	32,60
2"	45	75	47,5	50,8	92	4xD=9	39,20
2 1/2"	54	89	60,2	63,5	107	8xD=9	58,20
3"	56	104	72,9	76,2	125	8xD=11	76,60
4"	58	135	97,4	101,6	157	8xD=11	94,80



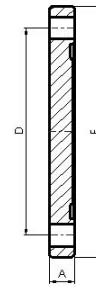
4308KZ Aseptik-Bundflansch kurze Baulänge DIN 11864-2							€ / Stk.
Zoll	A	B	C	D	E	F	1.4404
1"	40	49	22,1	25,4	66	4xD=9	24,20
1 1/2"	45	62	34,8	38,1	79	4xD=9	25,50
2"	45	75	47,5	50,8	92	4xD=9	28,40
2 1/2"	54	89	60,2	63,5	107	8xD=9	36,80
3"	56	104	72,9	76,2	125	8xD=11	53,00
4"	58	135	97,4	101,6	157	8xD=11	62,60



	<b>4309B Aseptik-Blindnutflansch DIN 11864-A</b>				<b>€ / Stk.</b>
	<b>DIN</b>				<b>1.4404</b>
	DN	A	D	E	
	10	11,5	37,0	54,0	54,20
	15	11,5	42,0	59,0	55,80
	20	11,5	47,0	64,0	56,40
	25	11,5	53,0	70,0	57,10
	32	11,5	59,0	76,0	58,50
	40	11,5	65,0	82,0	60,60
	50	11,5	77,0	94,0	65,40
	65	11,5	95,0	113,0	76,20
	80	13,5	112,0	133,0	81,40
	100	15,5	137,0	159,0	99,20
125	15,5	161,0	183,0	155,50	
150	17,5	188,0	213,0	198,80	
	<b>4309BA Aseptik-Blindnutflansch DIN 11864-A</b>				<b>€ / Stk.</b>
	<b>Zoll</b>				<b>1.4404</b>
	DN	A	D	E	
	1/2"	11,5	35,0	52,0	55,10
	3/4"	11,5	40,0	57,0	56,40
	1"	11,5	49,0	66,0	58,80
	1 1/2"	11,5	62,0	79,0	61,60
	2"	11,5	75,0	92,0	67,20
	2 1/2"	11,5	89,0	107,0	78,50
	3"	13,5	104,0	125,0	83,60
	4"	15,5	135,0	157,0	104,10
	<b>4309BI Aseptik-Blindnutflansch DIN 11864-A</b>				<b>€ / Stk.</b>
	<b>ISO</b>				<b>1.4404</b>
	DN	A	D	E	
	10	11,5	42,0	59,0	54,20
	15	11,5	45,0	62,0	55,80
	20	11,5	52,0	69,0	56,40
	25	11,5	57,0	74,0	57,10
	32	11,5	65,0	82,0	58,50
	40	11,5	71,0	88,0	60,60
	50	11,5	85,0	103,0	65,40
	65	13,5	104,0	125,0	76,20
	80	13,5	116,0	137,0	81,40
	100	15,5	146,0	168,0	99,20

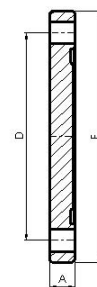
### 4308B Aseptik-Blindbundflansch DIN 11864-A DIN

DN	A	D	E	€ / Stk.
				1.4404
10	10,0	37,0	54,0	52,20
15	10,0	42,0	59,0	53,80
20	10,0	47,0	64,0	54,40
25	10,0	53,0	70,0	55,10
32	10,0	59,0	76,0	56,20
40	10,0	65,0	82,0	58,00
50	10,0	77,0	94,0	62,80
65	10,0	95,0	113,0	73,50
80	12,0	112,0	133,0	78,80
100	14,0	137,0	159,0	96,60



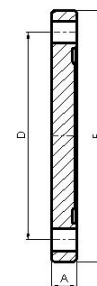
### 4308BA Aseptik-Blindbundflansch DIN 11864-A Zoll

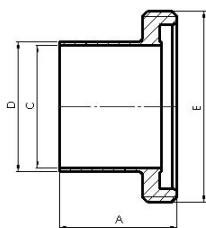
DN	A	D	E	€ / Stk.
				1.4404
1/2"	10,0	35,0	52,0	54,60
3/4"	10,0	40,0	57,0	55,20
1"	10,0	49,0	66,0	56,40
1 1/2"	10,0	62,0	79,0	59,20
2"	10,0	75,0	92,0	63,60
2 1/2"	10,0	89,0	107,0	74,20
3"	12,0	104,0	125,0	79,60
4"	14,0	135,0	157,0	97,50



### 4308BI Aseptik-Blindbundflansch DIN 11864-A ISO

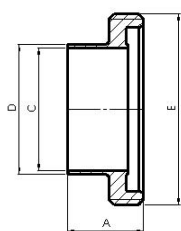
DN	A	D	E	€ / Stk.
				1.4404
8	10,0	37,0	54,0	52,20
10	10,0	42,0	59,0	52,20
15	10,0	45,0	62,0	53,80
20	10,0	52,0	69,0	54,60
25	10,0	57,0	74,0	55,80
32	10,0	65,0	82,0	56,60
40	10,0	71,0	88,0	58,50
50	10,0	85,0	103,0	63,40
65	10,0	104,0	125,0	74,60
80	12,0	116,0	137,0	79,80
100	14,0	146,0	168,0	98,20



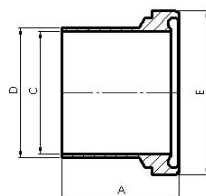
### 4213 I Aseptik-Gewindestutzen normale Baulänge Form A DIN 11864-1

ISO					€/ Stk.
DN	A	C	D	E	1.4404
15	43	18,1	21,3	RD 34x1/8"	12,40
20	43	23,7	26,9	RD 44x1/6"	13,80
25	48	29,7	33,7	RD 52x1/6"	15,10
32	48	38,4	42,4	RD 58x1/6"	16,90
40	49	44,3	48,3	RD 65x1/6"	21,10
50	60	56,3	60,3	RD 78x1/6"	26,00
65	64	71,5	76,1	RD 95x1/6"	41,80
80	64	84,3	88,9	RD 110x1/4"	51,50
100	68	109,7	114,3	RD 160x1/4"	74,60



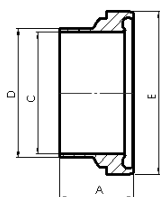
### 4213 K-I Aseptik-Gewindestutzen kurze Baulänge Form A DIN 11864-1

ISO					€/ Stk.
DN	A	C	D	E	1.4404
15	21	18,1	21,3	RD 34x1/8"	9,80
20	26	23,7	26,9	RD 44x1/6"	10,20
25	30	29,7	33,7	RD 52x1/6"	10,40
32	31	38,4	42,4	RD 58x1/6"	11,60
40	31	44,3	48,3	RD 65x1/6"	13,00
50	36	56,3	60,3	RD 78x1/6"	16,20
65	42	71,5	76,1	RD 95x1/6"	27,40
80	50	84,3	88,9	RD 110x1/4"	34,40
100	54	109,7	114,3	RD 160x1/4"	42,80



### 4214 I Aseptik-Bundstutzen normale Baulänge Form A DIN 11864-1

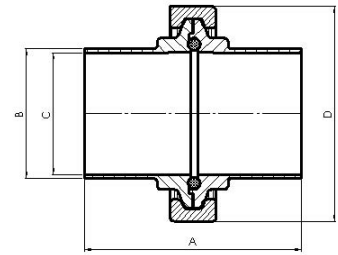
ISO				€/ Stk.
DN	A	C	D	1.4404
10	40	14,0	17,2	15,20
15	40	18,1	21,3	15,60
20	41	23,7	26,9	16,70
28	47	29,7	33,7	16,80
32	47	38,4	42,4	18,50
40	48	44,3	48,3	22,80
50	60	56,3	60,3	28,20
65	61	71,5	76,1	45,20
80	64	84,3	88,9	55,50
100	68	109,7	114,3	78,80



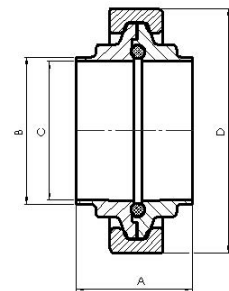
### 4214 K-I Aseptik-Bundstutzen kurze Baulänge Form A DIN 11864-1

ISO				€/ Stk.
DN	A	C	D	1.4404
10	18	14,0	17,2	10,50
15	18	18,1	21,3	11,00
20	22	23,7	26,9	11,80
25	25	29,7	33,7	12,20
32	26	38,4	42,4	12,80
40	30	44,3	48,3	14,00
50	34	56,3	60,3	17,60
65	38	71,5	76,1	29,60
80	46	84,3	88,9	37,20
100	48	109,7	114,3	49,80

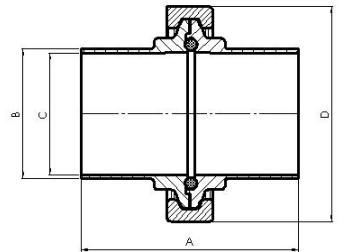
4294 Clampverbindung Normal Form A DIN 11864					
DIN	EPDM-O-Ring				€/ Stk.
DN	A	B	C	D	316L
10	76,0	13,0	10,0	43,0	61,20
15	76,0	19,0	16,0	43,0	58,40
20	76,0	23,0	20,0	57,0	54,80
25	77,0	29,0	26,0	57,0	48,40
32	88,0	35,0	32,0	57,0	54,10
40	88,0	41,0	38,0	73,0	58,60
50	89,0	53,0	50,0	89,0	72,20
65	113,0	70,0	66,0	99,0	106,80
80	117,0	85,0	81,0	118,0	142,50
100	120,0	104,0	100,0	145,0	190,50



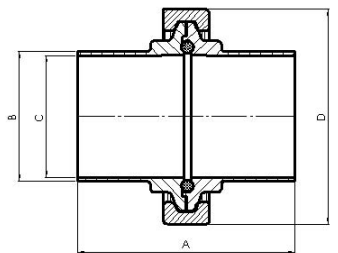
4294K Clampverbindung kurz Form A DIN 11864-3					
DIN	EPDM-O-Ring				€/ Stk.
DN	A	B	C	D	1.4404
10	--	13	10	43	55,50
15	--	19	16	43	53,20
20	--	23	20	57	51,60
25	--	29	26	57	42,80
32	--	35	32	57	48,60
40	--	41	38	73	51,50
50	--	53	50	89	63,80
65	--	70,0	66,0	99,0	97,80
80	--	85	81	118	122,60
100	--	104	100	145	178,40

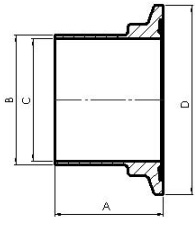
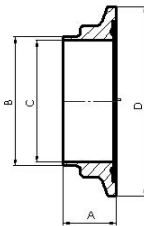
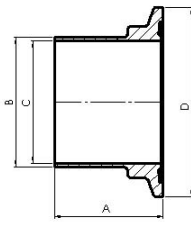
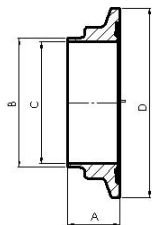


4294-Z Clampverbindung Normal Form A DIN 11864					
Zoll	EPDM-O-Ring				€/ Stk.
DN	A	B	C	D	1.4404
1/2"	76	12,7	9,4	43	61,40
3/4"	76	19,05	15,75	43	59,90
1"	77	24,4	22,1	57	48,80
1 1/2"	88	38,1	34,8	73	58,70
2"	89	50,8	47,5	89	69,80
2 1/2"	115	63,5	60,2	99	107,50
3"	117	76,2	72,9	118	128,60
4"	119	101,6	97,4	145	188,20

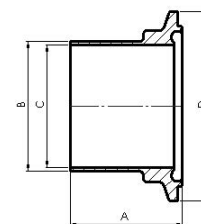


4294I Clampverbindung Normal Form A DIN 11864-3					
ISO	EPDM-O-Ring				€/ Stk.
DN	A	B	C	D	1.4404
10	76,0	17,2	14,0	43,0	72,60
15	76,0	21,3	18,1	43,0	71,20
20	76,0	26,9	23,7	43,0	70,50
25	77,0	33,7	29,7	57,0	56,40
32	88,0	42,4	38,4	57,0	60,80
40	88,0	48,3	44,3	73,0	64,20
50	89,0	60,3	56,3	89,0	79,60
65	113,0	76,1	72,1	99,0	119,50
80	117,0	88,9	84,9	118,0	160,60
100	120,0	114,3	109,1	145,0	228,40

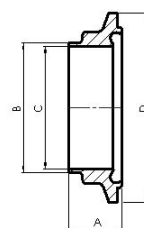


	<b>4296 Bundclampstutzen Normal DIN 11864-3</b>					<b>€ / Stk.</b>
	<b>DIN</b>					
	DN	A	B	C	D	
	10	38,0	13,0	10,0	34,0	19,80
	15	38,0	19,0	16,0	34,0	19,80
	20	38,0	23,0	20,0	50,5	20,50
	25	38,5	29,0	26,0	50,5	22,20
	32	44,0	35,0	32,0	50,5	23,80
	40	44,0	41,0	38,0	64,0	24,20
	50	44,5	53,0	50,0	77,5	28,60
	65	56,5	70,0	66,0	91,0	36,80
	80	58,5	85,0	81,0	106,0	58,20
100	60,0	104,0	100,0	130,0	66,80	
	<b>4296K Aseptik-Bundclampstutzen kurz DIN 11864-3</b>					<b>€ / Stk.</b>
	<b>DIN</b>					
	DN	A	B	C	D	
	10	18,0	13	10	34	16,40
	15	18,0	19	16	34	16,40
	20	18,0	23	20	50,5	17,20
	25	21,5	29	26	50,5	18,80
	32	21,5	35	32	50,5	19,60
	40	21,5	41	38	64	19,80
	50	21,5	53	50	77,5	22,50
	65	28,0	70	66	91	29,40
	80	28,0	85	81	106	42,10
100	28,0	104	100	130	55,00	
	<b>4296A Bundclampstutzen normal DIN 11864-3</b>					<b>€ / Stk.</b>
	<b>Zoll</b>					
	DN	A	B	C	D	
	1/2"	38,0	12,7	9,4	34,0	20,50
	3/4"	38,0	19,05	15,75	34,0	20,50
	1"	38,5	25,4	22,1	50,5	23,80
	1 1/2"	44,0	38,1	34,8	64,0	26,60
	2"	44,5	50,8	47,5	77,5	30,50
	2 1/2"	57,5	63,5	60,2	91,0	39,20
	3"	58,5	76,2	72,9	106,0	64,10
	4"	59,5	101,6	97,4	130,0	72,50
		<b>4296KA Bundclampstutzen kurz DIN 11864-3</b>				
<b>Zoll</b>					1.4404	
DN		A	B	C	D	
1/2"		18,0	12,7	9,4	34	17,50
3/4"		18,0	19,05	15,75	34	17,50
1"		21,5	25,4	22,1	50,5	19,80
1 1/2"		21,5	38,1	34,8	64	22,20
2"		21,5	50,8	47,5	77,5	24,40
2 1/2"		28,0	63,5	60,2	91	31,60
3"		28,0	76,2	72,9	104	46,40
4"		28,0	101,6	97,4	130	58,50

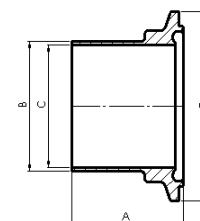
4295 Nutclampschrauben normal DIN 11864-3					€ / Stk.
DN	A	B	C	D	
					1.4404
10	39,5	13,0	10,0	34,0	20,80
15	39,5	19,0	16,0	34,0	20,80
20	39,5	23,0	20,0	50,5	21,60
25	40,0	29,0	26,0	50,5	23,40
32	45,5	35,0	32,0	50,5	25,00
40	45,5	41,0	38,0	64,0	26,20
50	46,0	53,0	50,0	77,5	30,50
65	58,0	70,0	66,0	91,0	39,20
80	60,0	85,0	81,0	106,0	61,60
100	61,5	104,0	100,0	130,0	69,50



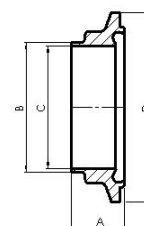
4295K Nutclampschrauben kurz DIN 11864-3					€ / Stk.
DN	A	B	C	D	
					1.4404
10	18,0	13	10	34	17,20
15	18,0	19	16	34	17,20
20	18,0	23	20	50,5	18,40
25	21,5	29	26	50,5	19,80
32	21,5	35	32	50,5	21,80
40	21,5	41	38	64	22,20
50	21,5	53	50	77,5	24,60
65	28,0	70	66	91	31,50
80	28,0	85	81	106	44,00
100	28,0	104	100	130	57,50

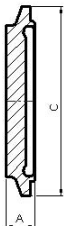


4295A Nutclampschrauben normal DIN 11864-3					€ / Stk.
Zoll	A	B	C	D	
					1.4404
1/2"	39,5	12,7	9,4	34,0	21,60
3/4"	39,5	19,05	15,75	34,0	21,60
1"	40,0	25,4	22,1	50,5	25,20
1 1/2"	45,5	38,1	34,8	64,0	28,10
2"	46,0	50,8	47,5	77,5	32,80
2 1/2"	59,0	63,5	60,2	91,0	42,60
3"	60,0	76,2	72,9	106,0	66,60
4"	61,0	101,6	97,4	130,0	75,50

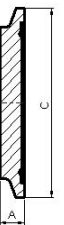


4295AK Nutclampschrauben kurz DIN 11864-3					€ / Stk.
Zoll	A	B	C	D	
					1.4404
1/2"	18,0	12,7	9,4	34	18,20
3/4"	18,0	19,05	15,75	34,0	18,20
1"	18,0	25,4	22,1	50,5	20,50
1 1/2"	21,5	38,1	34,8	64,0	23,40
2"	21,5	50,8	47,5	77,5	25,60
2 1/2"	21,5	63,5	60,2	91,0	33,10
3"	28,0	76,2	72,9	106	47,80
4"	28,0	101,6	97,4	130	59,60

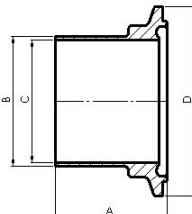


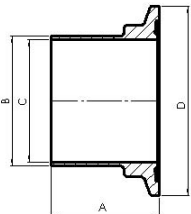
	4295B Blindnutclamp DIN 11864 DIN			€/ Stk.
	DN	A	C	1.4404
	10	11,5	34,0	24,80
	15	11,5	34,0	26,60
	20	11,5	50,5	29,50
	25	11,5	50,5	30,20
	32	11,5	50,5	33,80
	40	11,5	64,0	35,50
	50	11,5	77,5	39,80
	65	11,5	91,0	47,50
	80	13,5	106,0	59,60
	100	15,5	130,0	74,00

Blindnutclamp Zoll und ISO auf Anfrage

	4296B Blindbundclampsutzen DIN 11864 DIN			€/ Stk.
	DN	A	C	1.4404
	10	10,0	34,0	22,80
	15	10,0	34,0	24,60
	20	10,0	50,5	27,80
	25	10,0	50,5	28,40
	32	10,0	50,5	31,60
	40	10,0	64,0	34,20
	50	10,0	77,5	37,50
	65	10,0	91,0	45,20
	80	12,0	106,0	56,90
	100	14,0	130,0	71,50

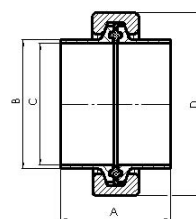
Blindnutclamp Zoll und ISO auf Anfrage

	4295I Nutclampsutzen DIN 11864 ISO					€/ Stk.
	DN	A	B	C	D	1.4404
	10	39,5	17,2	14,0	34,0	20,10
	15	40,5	21,3	18,1	34,0	20,10
	20	40,5	26,9	23,7	50,5	21,40
	25	45,5	33,7	29,7	50,5	23,20
	32	45,5	42,4	38,4	64,0	25,10
	40	46,5	48,3	44,3	64,0	25,80
	50	58,5	60,3	56,3	91,0	29,60
	65	60,0	76,1	72,1	106,0	39,80
	80	62,5	88,9	84,3	119,0	58,60
	100	62,5	114,3	109,7	114,4	66,20

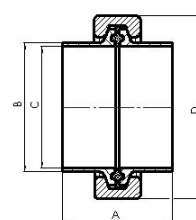
	4296I Bundclampsutzen DIN 11864 ISO					€/ Stk.
	DN	A	B	C	D	1.4404
	10	38,0	17,2	14,0	34,0	19,50
	15	39,0	21,8	18,1	34,0	19,50
	20	39,0	26,9	23,7	50,5	20,20
	25	44,0	33,7	29,7	50,5	21,90
	32	44,0	42,4	38,4	64,0	23,80
	40	45,0	48,3	44,3	64,0	24,50
	50	57,0	60,3	56,3	91,0	28,80
	65	58,5	76,1	72,1	106,0	38,20
	80	61,0	88,9	84,3	119,0	57,80
	100	61,0	114,3	109,7	144,4	65,50



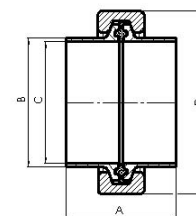
294 TC-Verbindung / EPDM ähnl. DIN 32676 DIN					€ / Stk.
DN	A	B	C	D	1.4404
10	72,0	13,0	10,0	43,0	53,30
15	72,0	19,0	16,0	43,0	53,30
20	72,0	23,0	20,0	43,0	53,30
25	72,0	29,0	26,0	57,0	49,80
32	82,0	35,0	32,0	57,0	53,40
40	82,0	41,0	38,0	57,0	52,20
50	82,0	53,0	50,0	73,0	53,30
65	102,0	70,0	66,0	99,0	71,60
80	102,0	85,0	81,0	118,0	101,50
100	102,0	104,0	100,0	127,0	142,30
<b>TC-Klammer 1.4301</b>					



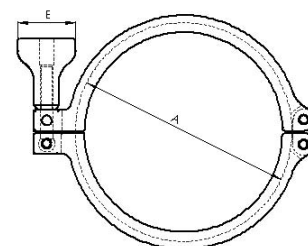
294A TC-Verbindung / EPDM Zoll					€ / Stk.
DN	A	B	C	D	1.4404
1/2"	59,0	12,7	9,4	33,0	54,50
3/4"	59,0	19,05	15,75	33,0	54,50
1"	79,0	25,4	22,1	57,0	49,80
1 1/2"	79,0	38,1	34,8	57,0	50,20
2"	79,0	50,8	47,5	73,0	53,30
2 1/2"	79,0	63,5	60,2	89,0	71,60
3"	99,0	76,2	72,9	99,0	101,50
4"	99,0	101,6	97,4	127,0	142,30
<b>TC-Klammer 1.4301</b>					

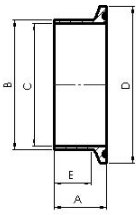


294I TC-Verbindung / EPDM ISO					€ / Stk.
DN	A	B	C	D	1.4404
10	72,0	17,2	14,0	43,0	54,10
15	72,0	21,3	18,1	43,0	54,10
20	72,0	26,9	23,7	57,0	54,90
25	82,0	33,7	29,7	57,0	55,40
32	82,0	42,4	38,4	57,0	56,20
40	82,0	48,3	44,3	73,0	57,60
50	82,0	60,3	56,3	89,0	62,10
65	102,0	76,1	72,1	99,0	83,20
80	102,0	88,9	84,3	118,0	113,90
100	102,0	114,3	109,7	145,0	170,90
<b>TC-Klammer 1.4301</b>					

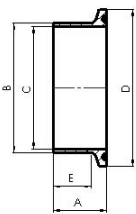


298 SH TC-Klammer massiv, Doppelgelenk				€ / Stk.
DN	A	E		1.4301
1/2"-3/4"	28	34		26,50
10 / 15 / 20	37	34		25,00
1"/25	53	34		23,80
1 1/2"/40	53	34		23,80
2"/50	67	34		24,50
2 1/2"	80	34		30,60
3"/65	94	34		30,60
3 1/2"/80	109	34		40,50
4"/100	122	34		46,40
<b>TC-Klammer 1.4301</b>				

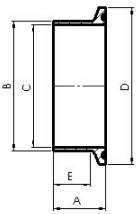


		<b>295 TC-Stutzen DIN 32676</b>					€ / Stk.
		<b>DIN</b>					
		DN	A	B	C	D	1.4404
		10	18	13	10	34	12,40
		15	18	19	16	34	12,40
		20	18	23	20	34	12,40
		25	21,5	29	26	50,5	11,60
		32	21,5	35	32	50,5	13,40
		40	21,5	41	38	50,5	11,80
		50	21,5	53	50	64	12,80
		65	28	70	66	91	18,80
		80	28	85	81	106	28,60
		100	28	104	100	119	44,20
		125	28	129	125	155	71,40
		150	28	154	150	183	96,60
		200	28	204	200	233,5	138,00

Sonderlängen auf Anfrage

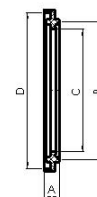
		<b>295 Z TC-Stutzen DIN 32676</b>					€ / Stk.
		<b>Zoll</b>					
		DN	A	B	C	D	1.4404
		1/2"	18	12,7	9,4	25	12,40
		3/4"	18	19,1	15,8	25	12,40
		1"	21,5	25,4	22,9	50,5	11,60
		1 1/2"	21,5	38,1	35,1	50,5	11,80
		2"	21,5	50,8	47,8	64	12,80
		2 1/2"	28	63,5	60,5	77,5	18,80
		3"	28	76,1	72,1	91	28,60
		4"	28	101,6	97,6	119	44,20

Sonderlängen auf Anfrage

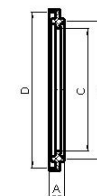
		<b>295I TC-Stutzen DIN 32676</b>					€ / Stk.
		<b>ISO</b>					
		DN	A	B	C	D	1.4404
		10	18	17,2	14	34	12,80
		15	18	17,2	14	34	12,80
		20	21,5	21,3	18,1	34	13,20
		25	21,5	33,7	29,7	50,5	14,40
		32	21,5	42,4	38,4	50,5	14,80
		40	21,5	48,3	44,3	64	15,50
		50	28	60,3	56,3	77,5	17,20
		65	28	76,1	72,1	91	24,60
		80	28	88,9	84,9	106	34,80
		100	28	114,3	110,3	130	58,50

Sonderlängen auf Anfrage

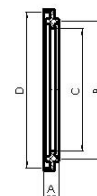

297 TC-Dichtring DIN									
€ / Stk.									
DN	A	B	C	D	NBR	EPDM	PTFE	Silikon	Viton
10	5,5	27,5	10,2	34	3,20	3,50	13,20	4,00	5,80
15	5,5	27,5	16,2	37	3,20	3,50	13,20	4,00	5,80
20	5,5	27,5	20,2	34	3,50	3,50	13,20	4,00	5,80
25	5,5	43,5	26,2	50,5	2,60	2,80	20,90	3,50	5,10
40	5,5	43,5	38,2	50,5	2,60	2,80	20,90	3,50	5,10
50	5,5	56,5	50,2	64	3,00	3,20	25,20	3,80	6,00
65	5,5	83,5	66,2	91	3,20	3,40	30,30	4,20	8,80
80	5,5	97,0	81,2	106,0	3,50	3,80	33,00	4,80	10,60
100	5,5	110	100,2	119	6,80	7,50	39,90	8,20	14,10
125	5,5	145	125,2	155	22,40	28,50	46,90	28,50	31,80
150	5,5	173	150,2	183	26,50	36,80	61,20	34,60	38,20
200	5,5	233,5	200,2	233,5	34,10	42,60	84,60	47,50	52,80



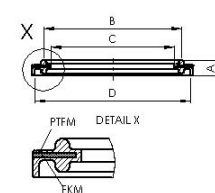
297 Z TC-Dichtung Zoll									
€ / Stk.									
DN	A	B	C	D	NBR	EPDM	PTFE	Silikon	Viton
1/2"	5,5	21	11	25	3,20	3,20		4,00	5,80
3/4"	5,5	21	16	25	3,20	3,20		4,00	5,80
1"	5,5	43,5	23,1	50,5	2,60	2,80	19,50	3,50	5,10
1 1/2"	5,5	43,5	35,3	50,5	2,60	2,80	19,50	3,50	5,10
2"	5,5	56,5	48	64	3,00	3,20	20,00	3,80	6,00
2 1/2"	5,5	70,5	60,7	77,5	3,20	3,40	28,90	4,20	8,80
3"	5,5	83,5	72,3	91	3,50	3,80	31,70	4,80	10,60
4"	5,5	110	97,8	119	6,80	7,50	43,20	8,20	14,10

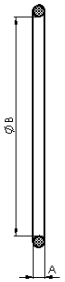

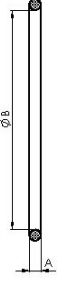
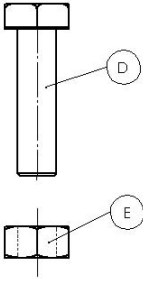


2971 TC-Dichtung ISO					
€ / Stk.					
DN	A	B	EPDM	PTFE	Viton
10	14,2	34	3,50	12,50	5,80
15	18,3	34	3,50	12,50	5,80
20	23,9	50,5	3,50	13,20	5,80
25	29,9	50,5	2,80	13,40	5,10
32	38,6	50,5	2,80	13,40	5,10
40	44,5	64,0	2,80	15,20	6,40
50	56,5	77,5	3,20	18,40	9,20
65	72,3	91,0	3,40	19,80	11,80
80	85,1	106,0	3,80	24,10	14,60
100	110,5	130	7,50	28,50	21,20



297 UM TC-Dichtung / ummantelt Viton-PTFE DIN					
€ / Stk.					
DN	A	B	C	D	Viton/PTFE
10	5,5	27,5	10,2	34	18,50
15	5,5	27,5	16,2	37	18,50
20	5,5	27,5	20,2	34	18,50
25	5,5	43,5	26,2	50,5	19,80
40	5,5	43,5	38,2	50,5	19,80
50	5,5	56,5	50,2	64	21,60
65	5,5	83,5	66,2	91	26,40
80	5,5	97,0	81,2	106,0	32,80
100	5,5	110	100,2	119	35,50
125	5,5	145	125,2	155	48,80
150	5,5	173	150,2	183	59,40
200	5,5	233,5	200,2	233,5	84,00



	<b>080-13 O-Ring / Dichtungen gem. FDA DIN 11864</b>				<b>€ / Stk.</b>	
	<b>DIN</b>					
	DN	A	B	EPDM	Viton	
	10	3,5	12,0	3,70	7,10	
	15	3,5	18,0	3,70	7,10	
	20	3,5	22,0	4,10	7,80	
	25	3,5	28,0	4,60	8,60	
	32	5,0	34,0	5,40	10,20	
	40	5,0	40,0	4,80	8,80	
	50	5,0	52,0	5,10	9,80	
	65	5,0	68,0	5,40	11,20	
	80	5,0	83,0	8,80	16,40	
	100	5,0	102,0	9,60	18,40	
	<b>080-13I O-Ring / Dichtungen gem. FDA DIN 11864</b>				<b>€ / Stk.</b>	
	<b>ISO</b>					
	DN	A	B	EPDM	Viton	
	10	3,5	16,0	3,70	7,10	
	15	3,5	20,0	3,70	7,10	
	20	3,5	26,0	3,80	7,40	
	25	5,0	32,0	4,60	8,60	
	32	5,0	40,5	4,80	8,80	
	40	5,0	46,5	4,80	8,80	
	50	5,0	58,5	5,10	9,80	
	65	5,0	73,5	5,60	11,20	
	80	5,0	86,5	8,80	16,80	
	100	5,0	111,0	9,80	18,80	
	<b>080-13Z O-Ring / Dichtungen gem. FDA DIN 11864</b>				<b>€ / Stk.</b>	
	<b>Zoll</b>					
	DN	A	B	EPDM	Viton	
	1/2"	3,5	12,0	3,70	7,10	
	3/4"	3,5	18,0	3,70	7,10	
	1"	3,5	24,0	4,60	8,60	
	1 1/2"	5,0	37,0	4,80	8,80	
	2"	5,0	50,0	5,10	9,80	
	2 1/2"	5,0	62,0	5,40	11,20	
	3"	5,0	75,0	8,80	16,40	
	4"	5,0	100,0	9,60	18,40	
		<b>081 Montagesatz - Flanschverbindung</b>				<b>€ / Stk.</b>
		DN	D	E		
DIN10-50/ISO8-50/1/2-2"		4xM8x30 DIN 933	4xM8 DIN 934	4,50		
DIN65/2 1/2"		8xM8x30 DIN 933	8xM8 DIN 934	9,50		
ISO 65/ 3"		8xM10x30 DIN 933	8xM10 DIN 934	10,20		
DIN 80/ISO80/ 4"		8xM10x35 DIN 933	8xM10 DIN 934	10,50		
DIN 100-125/ISO 100		8xM10x40 DIN 933	8xM10 DIN 934	10,80		