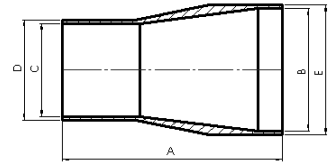
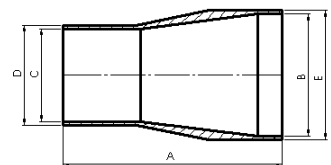


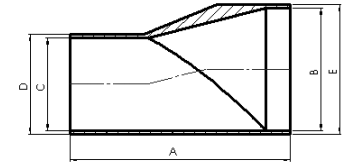
4322 Reduzierstück konzentrisch DIN 11865							€ / Stk.
DIN	A	B	C	D	E	Gew.(kg)	1.4404
15-10	60,0	13,0	10,0	16,0	19,0	0,060	34,40
20-10	60,0	13,0	10,0	20,0	23,0	0,040	45,30
20-15	60,0	19,0	16,0	20,0	23,0	0,060	41,10
25-10	70,0	13,0	10,0	26,0	29,0	0,080	56,80
25-15	70,0	19,0	16,0	26,0	29,0	0,120	45,70
25-20	70,0	23,0	20,0	26,0	29,0	0,100	41,60
32-15	80,0	19,0	16,0	32,0	35,0	0,100	52,20
32-20	80,0	23,0	20,0	32,0	35,0	0,120	46,10
32-25	80,0	29,0	26,0	32,0	35,0	0,180	44,00
40-15	90,0	19,0	16,0	38,0	41,0	0,260	52,40
40-20	90,0	23,0	20,0	38,0	41,0	0,160	46,40
40-25	90,0	29,0	26,0	38,0	41,0	0,200	44,10
40-32	90,0	35,0	32,0	38,0	41,0	0,160	44,20
50-15	90,0	19,0	16,0	50,0	53,0	0,500	59,80
50-20	90,0	23,0	20,0	50,0	53,0	0,400	56,10
50-25	90,0	29,0	26,0	50,0	53,0	0,360	49,80
50-32	90,0	35,0	32,0	50,0	53,0	0,400	48,20
50-40	90,0	41,0	38,0	50,0	53,0	0,280	45,50
65-25	110,0	29,0	26,0	66,0	70,0	0,960	104,60
65-32	110,0	35,0	32,0	66,0	70,0	0,780	102,80
65-40	110,0	41,0	38,0	66,0	70,0	0,640	92,50
65-50	110,0	53,0	50,0	66,0	70,0	0,540	90,80
80-40	110,0	41,0	38,0	81,0	85,0	0,820	128,60
80-50	110,0	53,0	50,0	81,0	85,0	0,840	124,20
80-65	110,0	70,0	66,0	81,0	85,0	0,780	120,50
100-50	135,0	53,0	50,0	100,0	104,0	2,220	148,00
100-65	135,0	70,0	66,0	100,0	104,0	1,280	142,50
100-80	135,0	85,0	81,0	100,0	104,0	1,180	134,20



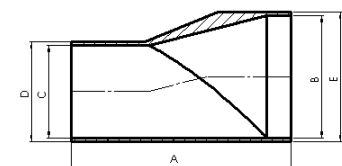
4322Z Reduzierstück DIN 11865							€ / Stk.
Zoll	A	B	C	D	E	1.4404	
3/4-1/2"	60,0	12,7	9,4	15,75	19,05	41,20	
1-1/2"	60,0	12,7	9,4	22,1	25,4	46,80	
1-3/4"	60,0	19,05	15,75	22,1	25,4	43,20	
1 1/2-3/4"	80,0	19,05	15,75	34,8	38,1	48,10	
1 1/2-1"	80,0	25,4	22,1	34,8	38,1	41,10	
2-1"	90,0	25,4	22,1	47,5	50,8	48,50	
2-1 1/2"	90,0	38,1	34,8	47,5	50,8	46,00	
2 1/2-1"	100,0	25,4	22,1	60,2	63,5	70,80	
2 1/2-1 1/2"	100,0	38,1	34,8	60,2	63,5	65,50	
2 1/2-2"	100,0	50,8	47,5	60,2	63,5	63,80	
3-1 1/2"	110,0	38,1	34,8	72,9	76,2	108,60	
3-2"	110,0	50,8	47,5	72,9	76,2	101,20	
3-2 1/2"	110,0	63,5	60,2	72,9	76,2	100,40	
4-2"	135,0	50,8	47,5	97,4	101,6	168,50	
4-2 1/2"	135,0	63,5	60,2	97,4	101,6	166,80	
4-3"	135,0	76,2	72,9	97,4	101,6	155,80	



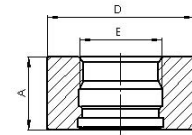
4323 Red-Stück exz. DIN 11865						€ / Stk.
DIN						1.4404
DN	A	B	C	D	E	
15-10	60,0	13,0	10,0	16,0	19,0	56,80
20-10	60,0	13,0	10,0	20,0	23,0	59,20
20-15	60,0	19,0	16,0	20,0	23,0	51,40
25-10	70,0	13,0	10,0	26,0	29,0	64,20
25-15	70,0	19,0	16,0	26,0	29,0	57,10
25-20	70,0	23,0	20,0	26,0	29,0	51,80
32-15	80,0	19,0	16,0	32,0	35,0	63,20
32-20	80,0	23,0	20,0	32,0	35,0	57,50
32-25	80,0	29,0	26,0	32,0	35,0	54,90
40-15	90,0	19,0	16,0	38,0	41,0	63,40
40-20	90,0	23,0	20,0	38,0	41,0	63,20
40-25	90,0	29,0	26,0	38,0	41,0	54,80
40-32	90,0	35,0	32,0	38,0	41,0	55,20
50-15	90,0	19,0	16,0	50,0	53,0	70,50
50-20	90,0	23,0	20,0	50,0	53,0	66,10
50-25	90,0	29,0	26,0	50,0	53,0	62,40
50-32	90,0	35,0	32,0	50,0	53,0	61,50
50-40	90,0	41,0	38,0	50,0	53,0	55,20
65-25	110,0	29,0	26,0	66,0	70,0	128,80
65-32	110,0	35,0	32,0	66,0	70,0	128,80
65-40	110,0	41,0	38,0	66,0	70,0	116,60
65-50	110,0	53,0	50,0	66,0	70,0	118,20
80-40	110,0	41,0	38,0	81,0	85,0	185,50
80-50	110,0	53,0	50,0	81,0	85,0	180,00
80-65	110,0	70,0	66,0	81,0	85,0	162,40
100-50	135,0	53,0	50,0	100,0	104,0	212,20
100-65	135,0	70,0	66,0	100,0	104,0	206,80
100-80	135,0	85,0	81,0	100,0	104,0	188,60



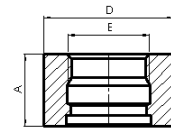
4323Z Red.-T-Stück exz. DIN 11865						€ / Stk.
Zoll						1.4404
DN	A	B	C	D	E	
3/4-1/2"	60,0	12,7	9,4	15,75	19,05	46,20
1-1/2"	60,0	12,7	9,4	22,1	25,4	48,10
1-3/4"	60,0	19,05	15,75	22,1	25,4	44,60
1 1/2-3/4"	80,0	19,05	15,75	34,8	38,1	49,80
1 1/2-1"	80,0	25,4	22,1	34,8	38,1	46,80
2-1"	90,0	25,4	22,1	47,5	50,8	56,40
2-1 1/2"	90,0	38,1	34,8	47,5	50,8	54,20
2 1/2-1"	100,0	25,4	22,1	60,2	63,5	83,10
2 1/2-1 1/2"	100,0	38,1	34,8	60,2	63,5	78,70
2 1/2-2"	100,0	50,8	47,5	60,2	63,5	72,50
3-1 1/2"	110,0	38,1	34,8	72,9	76,2	121,80
3-2"	110,0	50,8	47,5	72,9	76,2	118,50
3-2 1/2"	110,0	63,5	60,2	72,9	76,2	130,20
4-2"	135,0	50,8	47,5	97,4	101,6	180,50
4-2 1/2"	135,0	63,5	60,2	97,4	101,6	176,20
4-3"	135,0	76,2	72,9	97,4	101,6	169,20



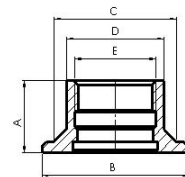
4062-1231 Muffe Liquiphant für Rohranschluß					€/ Stk.
DN	A	D	E		1.4404
50	29,6	53	1"		96,80
Muffen auch mit Zeugnis nach EN 10 204, 3.1.B AD-W2 lieferbar					



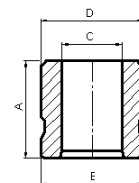
4062-1233 Muffe Liquiphant für Tankdomdeckel					€/ Stk.
DN	A	D	E		1.4404
50	29,6	60	1"		96,80
Muffen auch mit Zeugnis nach EN 10 204, 3.1.B AD-W2 lieferbar					



4062-1234 Muffe Liquiphant für Behälterwand						€/ Stk.
DN	A	B	C	D	E	1.4404
50	29,6	60	50	40	1"	97,50
Muffen auch mit Zeugnis nach EN 10 204, 3.1.B AD-W2 lieferbar						



4052 Einschweißstutzen Typ Ingold			€/ Stk.
DN		L	1.4404
1 1/4"		40	54,20
1 1/4"		45	56,80
Stutzen auch mit Zeugnis nach EN 10 204, 3.1.B AD-W2 lieferbar			



4072-112 Einschweißhülse für PT 100			€/ Stk.
DN	A		1.4404
1/2"	54,50		44,20
Einschweißhülse auch mit Zeugnis nach EN 10 204, 3.1.B AD-W2 lieferbar			

